

January '26 A

Let's Make Beautiful Things Together

Just some info: ADHERE means to stick your card elements together using a tape runner, a double sided tape, a liquid craft glue or any combination of those. If I specify a type of adhesive, that's because the situation will work BEST using the recommended adhesive. But you can always just use what you have!

Where to Start?

First confirm you have all card elements and pre-plan your card layout. Just to get an idea of how you want it to look.

Contents:

- 1 White card base
- 1 Grapefruit colored panel
- 1 Watermelon colored panel
- 15 Watermelon colored squares (9 thick, 6 thin)
- 1 White arch
- 2 Blue flower die cut sets (3 petal pieces, 2 stems)
- 1 Bee set (Black bee, white backer)
- 1 Big Hugs sentiment (white letters, black backer)
- 1 Set white flower centers and flower accents
- 1 Mini flower set (stem, flower, center)
- Foam pieces- adhesive backed on both sides
- Mailing Liner**
- 1 Coordinating envelope*



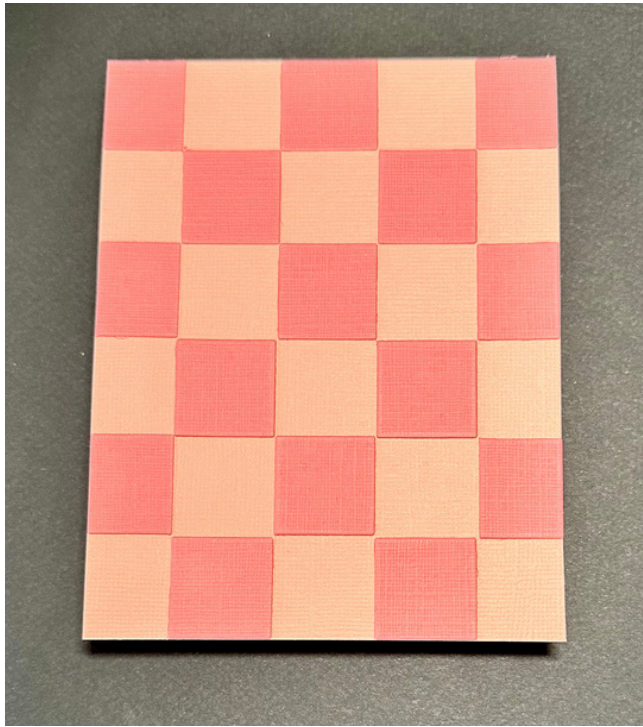
Let's Begin!

We'll construct the card front first.

You will need everything except the watermelon panel and the mini flower set.

1. You'll begin by decorating the grapefruit colored panel. You can see that there are lines pressed into the paper to help you create the pattern. Use the watermelon colored squares to make the checkered background panel. The thin squares fit in the outer edge spaces. The thick squares will fill in the rest of the checkered pattern. Use the example picture for help.
2. Adhere the checkered panel to the front of the white card base aligning all edges.
3. Next, use some, or all, of the mini foam rectangles to adhere the white arch to the center of the panel.
4. Now, construct the flowers. Layer the two matching petal pieces together, aligning them at the coordinating angle and offsetting them so that all of the petals can be seen. Adhere them together and add the coordinating white center.
5. The second flower will only need the white star flower added to the center.
6. Before adhering the stems in place, use the arch to help you choose the angle and placement. I trimmed the top of the tall stem so that it would sit inside the arch better. Once you're happy with how you want the stems, adhere them to the flowers and then add them to the card front. I tucked the very bottom of each stem behind the arch and let the other areas lay over top. See example picture for placement ideas.
7. Adhere the white Big Hugs word to the black backer. There will be an even border of black showing along each edge. Take care to remember the dot for the "i".
8. Add the Big Hugs to the card front. Use the three small foam squares to keep the overhang areas popped up to the same height as the arch. This will help add stability to the raised element. See example picture for help.
9. Next, use a light application of liquid glue to adhere the black body of the bee to the white backer. Leave the wings free of adhesive for added interest. Then add the bee to the card front.
10. Lastly, use the remaining white flower accents for added decoration. See example picture.

That's it! Now let's decorate the inside of the card.



1. Add the watermelon panel to the inside of the card making sure to leave an even border of white showing along each edge.
2. Next, using the pieces of the mini flower, adhere the white center to the blue flower.
3. Adhere the stem to the inside panel. Next add the flower at the top of the stem.

Thank you so much for crafting with me!

Don't forget to use the hashtag #sandiscardscreations on instagram to share your finished product and be featured in my story!

**All instructions can be found on the Card Kit
Instructions page at sandiscards.com**

***Confirm postage needed when mailing
mailing liner is used as a barrier over the card front to protect it during shipping