

September B

Just some info: ADHERE means to stick your card elements together using a tape runner, a double sided tape, a liquid craft glue or any combination of those. If I specify a type of adhesive, that's because the situation will work BEST using the recommended adhesive. But you can always just use what you have!



Where to Start?

First confirm you have all card elements and pre-plan your card layout. Just to get an idea of how you want it to look.

Contents:

- 1 Black card base
- 1 Black backer panel
- 6 Colored strips
- 1 Acetate clear panel
- 1 White panel
- 1 Black candle cutout panel
- 1 Black Happy die cut backer
- 1 Set of colored letters "HAPPY"
- 1 Set of cake die cuts
- 1 Set of sequins
- 4 Foam strips
- 1 Mailing liner (mailing liner only needed if you mail your card)**
- 1 Coordinating envelope*



Let's Begin!

We'll construct the card front first.

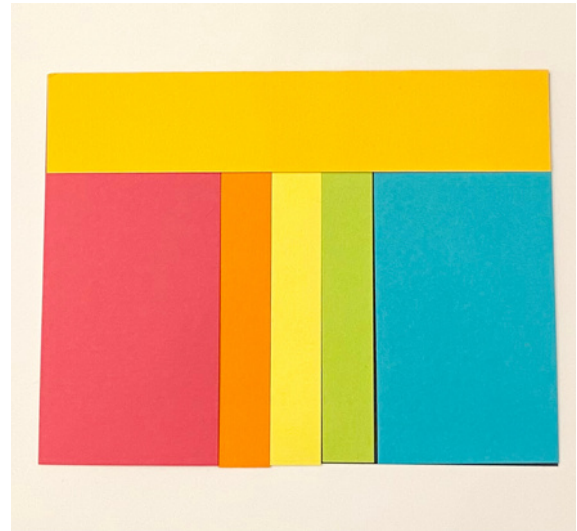
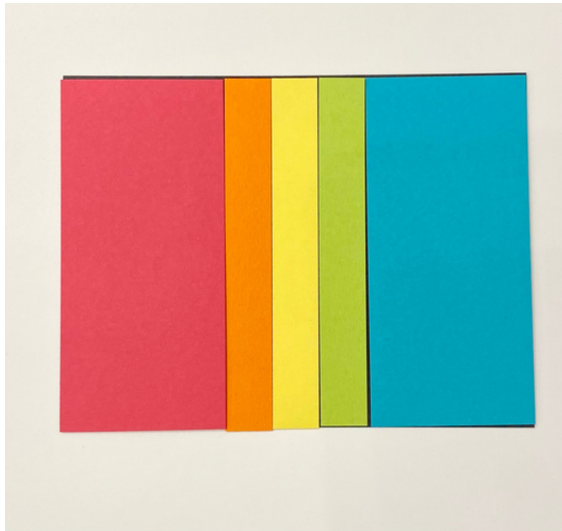
You'll need the black backer, the colored strips, the acetate panel, the candle cutout panel, the foam strips, the black Happy backer, the colored Happy letters and the sequins.

1. Let's put the shaker background together first. Adhere the colored strips to the horizontal black backer panel. Align the pink strip from top to bottom along the left edge. Next adhere the orange, light yellow, green and then blue strips in a row. See sample picture. To finish the backer piece, adhere the deep yellow strip along the top edge over top of the others. See sample picture.
2. **IMPORTANT:** This step should go next. Use a thin double sided tape or liquid craft glue to adhere the clear acetate panel to the back of the candle cutout panel. It should fit almost edge to edge.
3. *Now create the frame for the shaker bits to sit in. Only after the acetate is added, adhere the 4 foam strips to the back of the acetate/candle cutout to create a backer frame. The foam strips should sit snug with each other to not allow any of the shaker bits to escape. See sample picture. To adhere them, I recommend using a thin double sided tape or a thin line of liquid glue. Avoid getting adhesive past the edge of the foam. The sequins tend to stick to it and don't shake as well. For a strong double sided tape recommendation, visit sandiscards.com/shopmycraftroom
4. Once the frame is done, add the shaker sequins to the space inside the frame.
5. Now to close up the shaker you will cover the opening with the decorated backer panel. Add adhesive to the foam strips and place the backer over it to close up the frame making sure to have it completely sealed along each edge. Using a liquid glue at this point helps to give time to adjust placement. Be sure to have the colored strips facing down so that when you look through the candle cutout you will see the varied colors in the background. Once the shaker has been sealed you can shake it to see it work.
6. To finish the card front you will add the colored Happy letters to the coordinating places on the black Happy backer. I recommend adding small dots/lines of liquid glue to the back of the letters and then placing them. Adhere the decorated Happy sentiment to the shaker front.
7. To finish the front of the card, use a strong adhesive to adhere the decorated shaker to the front of the card base making sure to leave an even border of black along each edge.

Now let's decorate the inside of our card!

1. Decorate the remaining white panel with the cake pieces. I recommend carefully placing them on the panel where you'd like them to go and then adhering each piece in turn. Let the cake hang over the edge for added interest and then trim any excess. See example picture for placement ideas.
2. Finally, adhere the decorated panel to the inside of the card base making sure to leave an even border of black showing along each edge.

And you did it!



Thank you so much for crafting with me!

Don't forget to use the hashtag #sandiscardscreations on instagram to share your finished product and be featured in my story!

*Confirm postage needed when mailing

**mailing liner is used as a barrier over the card front to protect it during shipping